

EC-3805F

Fast Ethernet FTTx CPE



Product Overview

The Edge-Core EC-3805F is a Fast Ethernet Customer Premises Equipment with 4 10/100 Base TX RJ-45 LAN ports and 1 100 Base-BX WAN port with SC connector (EC-3805F). It is ideal for Fiber to the home (FTTH) or Fiber to the Building (FTTB) deployments with support of up to 15 km length.

Key Features and Benefits

High Performance

EC-3805F provides the wire-speed performance which can suit for home users for triple play and for business customers for higher speed data transmission. It supports hardware NAT, throughput close to line speed of 200Mbps bidirectional traffic.

VLAN

IEEE 802.1Q VLAN Tagging and Port-based VLAN are provided for separate data, voice and video traffic.

EC3805F Support up to 16 active VLAN

Multicast Control

IGMP snooping prevents flooding of IP multicast traffic and limits bandwidth intensive video traffic to only the subscribers.

IGMP proxy enables EC3805F to issue IGMP host messages such as join leave a channel on behalf of the hosts behind the CPE under router mode.

Comprehensive QoS

4 egress queues per port enable differentiated management of up to 4 traffic types.

Traffic is prioritized according to port, 802.1p and DSCP, giving optimal performance to real-time applications such as voice and video.

Per port asymmetric bidirectional rate-limiting, preserves network bandwidth and allowing maximum control of network resources.

Enhanced Security

EC3805/EC3805F supports WAN destination IP filter which only allows administrator with correct IP address range to manage the CPE.

EC3805/EC3805F supports LAN MAC filter to deny the specific host from access the network in order to prevent hacker or virus attack.

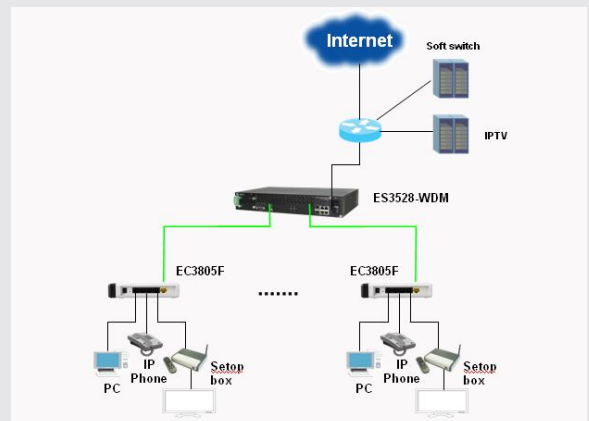
Easy Deployment

EC-3805F is a plug-and-play customer premise equipment for easy installation and use. It can be put on the desktop or wall mount without causing any life inconvenience.

Service provider can manage the CPE via intuitive web interface.

Application Diagram

EC-3805F provides NAT function. The switch can be configured in either Bridge or Router mode. When IGMP snooping is enabled, EC-3805/EC-3805F can forward the traffic from media server to the devices that join the IGMP Multicast group. The devices that are not IGMP member will not receive the traffic from the media server.





Features

Hardware Specifications

4 LAN: 4 10/100 Base-TX RJ-45 port
1 WAN: 1 100Base-BX port with SC connector

Network Management

Web-based management
SNMP v2c
IP management: Static IP or DHCP client

Traffic Management and QoS

IEEE 802.1p with 4 priority queues per port for different types of traffic
WRR (Weighted Round Robin)/SPQ (Strict Priority Queueing) scheduling /SP & WRR algorithm.

Electromagnetic Compatibility

FCC Class A,CE

Environmental Specifications

Temperature:
■ 0°C to 45°C (Standard Operating)
■ -20°C to 90°C (Non-Operating)
Humidity: 10% to 90% (Non-condensing)

Power

Power Consumption: 10W(Max)
Power Supply: DC 5V/2A

Warranty

Limited lifetime warranty

Key LAN Features

MAC address table size: 2K
IGMP v1, v2 and IGMP snooping
DHCP client/Server
NAT/INPAT ALGs such as NetMeeting, MSN messenger, FTP, Quick Time, SIP, etc.
Port forwarding
SNTP
VLANs:
•IEEE 802.1Q VLANs
•Port-based VLANs
802.3x Flow Control: Back-Pressure for half-duplex mode and Pause frame for full-duplex mode

Optical Features

Wavelength: Transmit-1310nm, Receive-1550nm
Cable: 9/125um Single Mode Fiber (ITU-T G.652)
Connector: Single SC Connector
Transmitting Power Range: -8 ~ -14dBm
Receiving Power Range: -8 ~ -30dBm
Link distance: 15km

IEEE Standards Compliance

IEEE 802.3 10 Base-T Ethernet
IEEE 802.3u 100 Base-TX Ethernet
IEEE 802.1Q VLAN tagging
IEEE 802.3x Flow Control
IEEE 802.1p Class of Service, Priority protocol
IEEE 802.1d Transparent Bridging

Ordering Information

Optional Accessories

Package Contents

Product Description